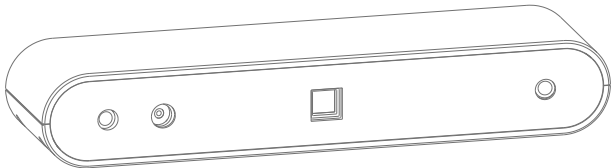


3D DEPTH CAMERA USER GUIDE V1.0



This guide provides information about the preparation and basic installation operations.

TABLE OF CONTENTS

PREPARATION

Preparation	2
Linux Installation Guide	3

GET STARTED

Get Started	4
Notice	6
SDK	8
FAQ	8
PRECAUTIONS	9
WARRANTY CARD	10
CERTIFICATE	12

PREPARATION

The 3D depth camera is compatible with Android, Windows and Linux operating system. When use it on Android or Windows, no driver is needed. First download the software, then connect the camera to a PC using a USB cable, at last run the software to start using it.

PREPARATION-Linux Installation Guide

- **INSTALL LIB FILES:**

1. libusb-1.0

```
sudo apt install libusb-1.0
```

2. qt5-default

```
sudo apt install qt5-default
```

3. Install LIB files

```
sudo cp $(AilookDemo PATH)/libailook.so /usr/lib/
```

```
sudo cp $(AilookDemo PATH)/libzx3dViewer.so  
/usr/lib/
```

- **Start the software**

1. Open Terminal

2. cd \$(AilookDemo PATH)

3. sudo ./AilookDemo (Input user name and password.

Note: The current user must be a root user.)

GET STARTED

- **Depth Camera**

Parameters:

Resolution: 640×400 and 1280×800.

Frame Rate: Depth output up to 30 fps. The max frame rate differs depending on the resolution.

Exposure: The max exposure time is inversely correlated to frame rate.

Gain: When adjusting the brightness or Gain, noise will appear and the depth accuracy will decrease. To obtain high accuracy, Gain is recommended to be ≤ 3 .

GET STARTED

- **Color Camera**

Parameters:

Resolution: 1600×1200 and 800×600.

Frame Rate: 15 fps RGB output in JPEG format.

Exposure: Support auto exposure.

Texture Off : switch from 3D texture model to 3D point cloud.

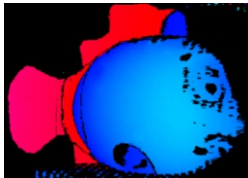
GET STARTED-Notice

1. Preview : Adjust Resolution and Frame Rate before clicking Start Preview. If the two parameters need to be adjusted in the preview mode, Stop Preview to adjust them.
2. The brightness can be adjusted through Exposure and Gain. Exposure is limited by frame rate, but Gain is not limited.

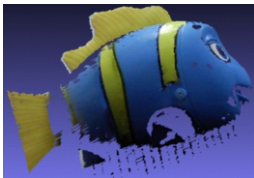
GET STARTED-Notice



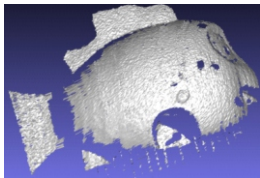
Actual object



2D depth image



3D model with texture



3D point cloud

SDK

SDK packages are available for Windows, Linux and Android system.

Users can obtain depth image and RGB image through the API and configure settings of the depth camera and RGB sensor such as resolution, frame rate, exposure and gain while viewing the image.

For detailed SDK documentation and DEMO software, please contact your local distributor for complete technical support and service.

FAQ

Q Images in Preview mode are fuzzy.

A You can wipe the glass lens with the cleaning cloth.

PRECAUTIONS

1. Please use the device indoor at the temperature of -10°C-35°C.
2. Do not dismantle or modify the device.
3. Please do not use the device in where there is dust or cigarette smoke.
4. Do not wet it by exposure to any liquid such as fresh water, sea water, milk, soda or soap water.
5. Do not use or store the device in extremely hot or poorly ventilated environment.
6. Do not crush or hammer the device. Do not drop it down or pile up heavy objects on it.
7. Do not touch or insert fingers into the connector.
8. In case of any faults, please stop using the device and contact your local distributor or authorized maintenance agent.

WARRANTY CARD

Warranty Instructions

- The warranty card shall be kept as voucher in a proper way for further maintenance.
- The warranty period shall be twelve months from the date of purchase.
- During the warranty period, if there are any quality problems and faults under the circumstances of normal use and maintenance, free maintenance and replacement parts will be available after verification.
- The company reserves the right to amend and interpret all contents.

Free maintenance is unavailable for the following cases


- The product is damaged due to incorrect installation and operation.
- Any parts of the product have been repaired, altered, refitted and replaced by technicians from other companies or organizations.
- The product number has been altered or it is inconsistent with that on the certificate.
- The product is damaged due to negligent use or infiltration of water or other substances.
- There are any faults or damages caused by accidents/natural disasters.

WARRANTY CARD

Information

Thank you for selecting our products. Please carefully read it, fill in the warranty card and keep it properly for better services.

Customer name		Contact	
Customer address		Contact number	
Product name		Product model	
Date of purchase		Manufacturing number	
Maintenance record	Date	Failure causes and solutions	



**This product is qualified according
to the delivery inspection.**

(Model) _____

(Checker) _____

(Date) _____

3D DEPTH CAMERA USER GUIDE